

Installation and User Manual

March 2020

EN



Single Channel Timer Remote SG 11429

Contents

Features	3
Screen Display & Button Functions	4
Technical Data.....	5
General Operation	5
Installation	6
Timer Set-up	7
Step 1 Timer unit activation	7
Step 2 Addressing Timer Unit to Motor	8
Changing Direction.....	8
Step 3 Setting the Clock (time of Day).....	9
Step 4 Setting the Timer – (open and close).....	10
Turn Off Timer Function.....	11
Turn On Timer Function.....	11
Troubleshooting.....	11



Features

Radio control

Battery operated

LCD display

Manual click buttons

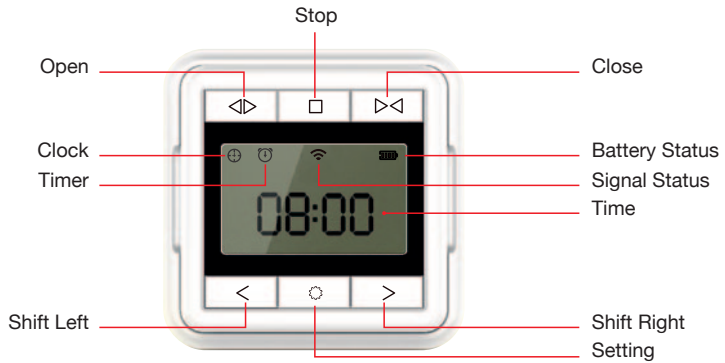
Timer function – one single open / close time applied to every day

Manual override function

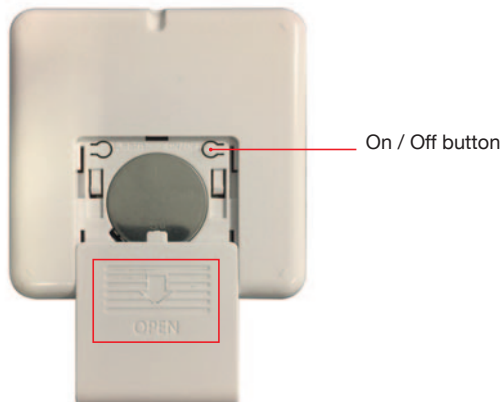
CR2450 battery (Lithium Cell)

Surface mounted back box with magnetic holder

Screen Display & Button Functions



Rear View



Technical Data

Part Number	SG 11429
Power supply	CR 2450 (3v) battery
Power	< 10 mW
Stand-by Current	≤ 5uA
Working Current	≤ 10mW
Radio Frequency	433.92 MHz
Working Temperature	-20°C~+55°C

General Operation

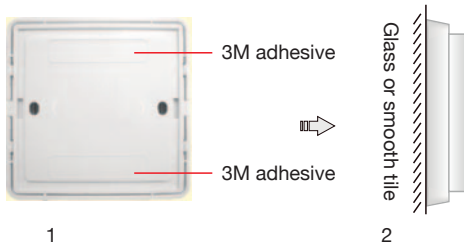
The SG 11429 can be used to control a single motor OR operate multiple motors, however if controlling multiple motors all will work simultaneously at the programmed times or from the manual buttons.

The SG 11429 can be used in either a timer mode - 1 open operation and 1 close operation can be programmed per day / 24 hour cycle, the timer function can be turned on or turned off and in either mode still operated as a manual wall switch.

Once open and close times have been set in the timer, these times will be retained in the memory even if the timer is switched off, the unit is turned off or if the battery has fully drained.

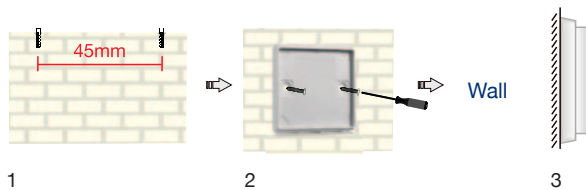
Installation

A) Installation with adhesive – available for glass and smooth tile.



- 1) Remove cover from adhesive strips
- 2) Position on tile or glass and apply pressure

B) Installation with screw – available for wall.



- 1) Position and Insert fixings into the wall
- 2) Fix surface mounted back box – ensure fitted the correct way up
- 3) Place unit in back box (secured in place with magnetic holder)

Timer Set-up

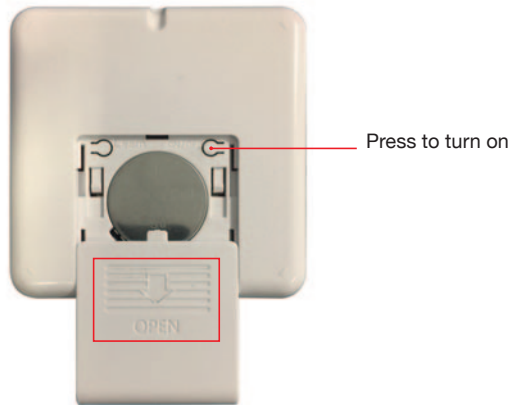
Step 1

Timer unit activation

Remove from surface holder, turn over to view the rear of the unit.

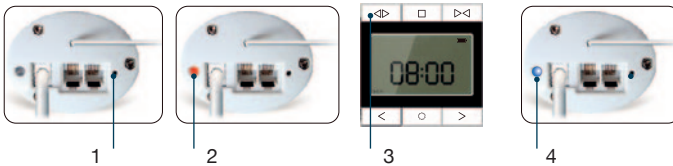
Open battery cover and activate unit by pressing on / off button – LCD display screen on front will activate.

Rear View



Step 2

Addressing Timer Unit to Motor

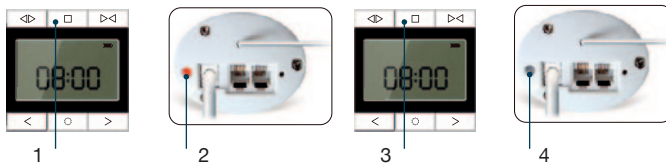


1. – Push PROGRAMMING button on motor with a pin for 1s
2. – LED on motor blinks red
3. – Press OPEN button on timer within the next 10s
4. – Blue light on motor flashes 3 times

Warning

If at this point the operation of the track is in reverse to the button direction, follow the instructions below.

Changing Direction



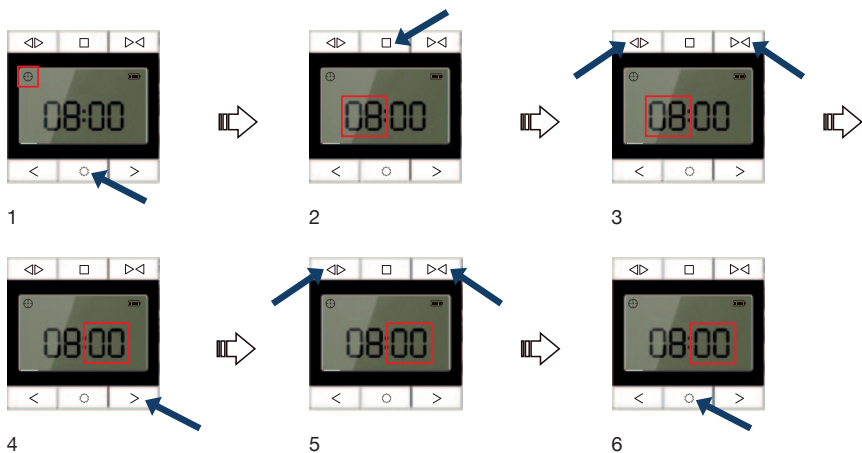
1. – Press STOP on the timer for 5s
2. – LED on motor flashes red slowly
3. – Release STOP and re-press within 10s
4. – LED on motor flashes blue x 3 - direction changed

Step 3

Setting the Clock (time of Day)

Note:

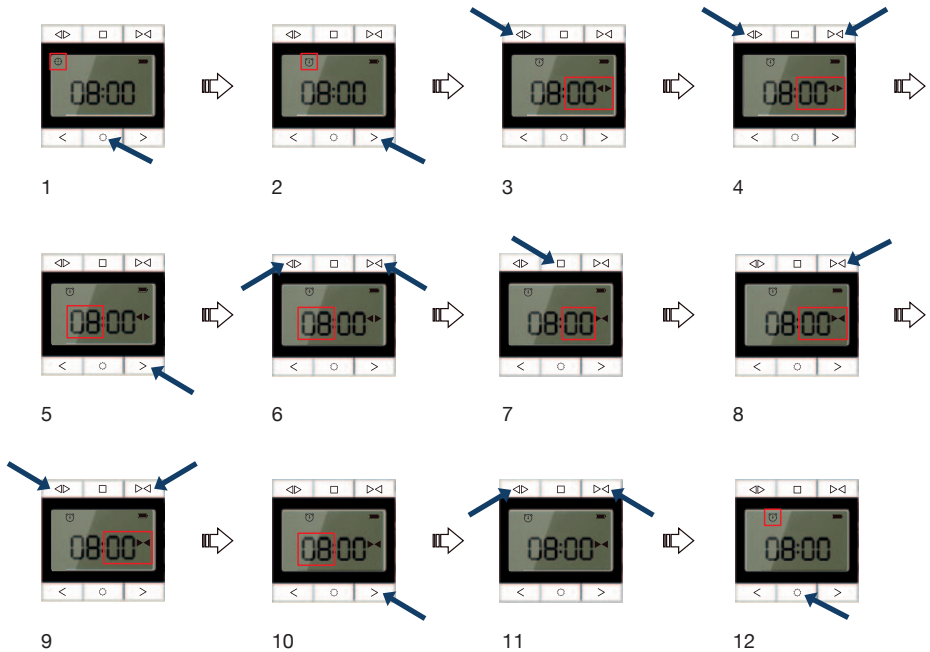
- i) When setting the clock – press OPEN to increase the hours / minutes, press CLOSE to decrease the hours / minutes. If you hold either the OPEN or CLOSE buttons for longer than 2 seconds and the digits will scroll rapidly whilst held.
- ii) When setting the clock SHIFT LEFT and SHIFT RIGHT move between the minutes and hours.
- iii) If during setting you wish to abort the process – Press and hold STOP for 3 seconds, the screen will revert to the control screen without saving any changes.



1. – Press SETTING button and hold for 3 seconds, the clock appears top left and flashes
2. – Press STOP button, the hour number flashes
3. – To set the correct hour - Press OPEN to increase the hours or CLOSE to decrease the hours
4. – Press SHIFT RIGHT now to move to the minutes – the minutes now flash
5. – To set the correct minute – Press OPEN to increase the minutes or Press CLOSE to decrease the minutes.
6. – Press SETTING button and hold for 3 seconds to finish setting the correct time

Step 4

Setting the Timer – (open and close)



1. – Press SETTING button for 1 second and release – the clock symbol appears on screen top left.
2. – Press SHIFT RIGHT – the clock will disappear, and the timer symbol will flash.
3. – Press OPEN the minutes will flash and the open symbol appears on the right of the screen.
4. – To set the correct minute – Press OPEN to increase the minutes or Press CLOSE to decrease the minutes.
5. – Press SHIFT RIGHT now to move to the hours – the hours now flash.
6. – To set the correct hour – Press OPEN to increase the hours or Press CLOSE to decrease the hours.
7. – Press STOP the close symbol will appear on the screen
8. – Press CLOSE and the minutes will flash – the close symbol remains on the screen.
9. – To set the correct minute – Press OPEN to increase the minutes or Press CLOSE to decrease the minutes.
10. – Press SHIFT RIGHT now to move to the hours – the hours now flash.
11. – To set the correct hour – Press OPEN to increase the hours or Press CLOSE to decrease the hours.
12. – Press and hold SETTING for 3 seconds this will set the timer and the timer symbol will stay solid.

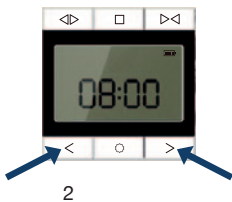
Turn Off Timer Function



1). With the timer function symbol on screen and timer function on - to now turn off

Press and hold both SHIFT left and SHIFT right together and hold for 3 seconds - the timer symbol will disappear and the timer function is now switched off.

Turn On Timer Function



2). With the timer function off and no timer symbol on the screen – to now turn on without changing the open / close times.

Press and hold both SHIFT left and SHIFT right together and hold for 3 seconds - the timer symbol will re-appear and the timer function is now switched back on.

Troubleshooting

Problem	Reason	Solution
If screen is incomplete and not clear	Battery level low	Change battery
Poor remote sensitivity	Check installation position for metal obstructions	Re-position unit
No response after pressing buttons	1. Screen is frozen	1. remove the battery and replace

Supplied by
SG-S | Silent Gliss Spares
Silent Gliss Systems
www.sg-s.co.uk email: sales@sg-s.co.uk
Tel: 0330 1272002 - 01395 232528

www.silentgliss.co.uk