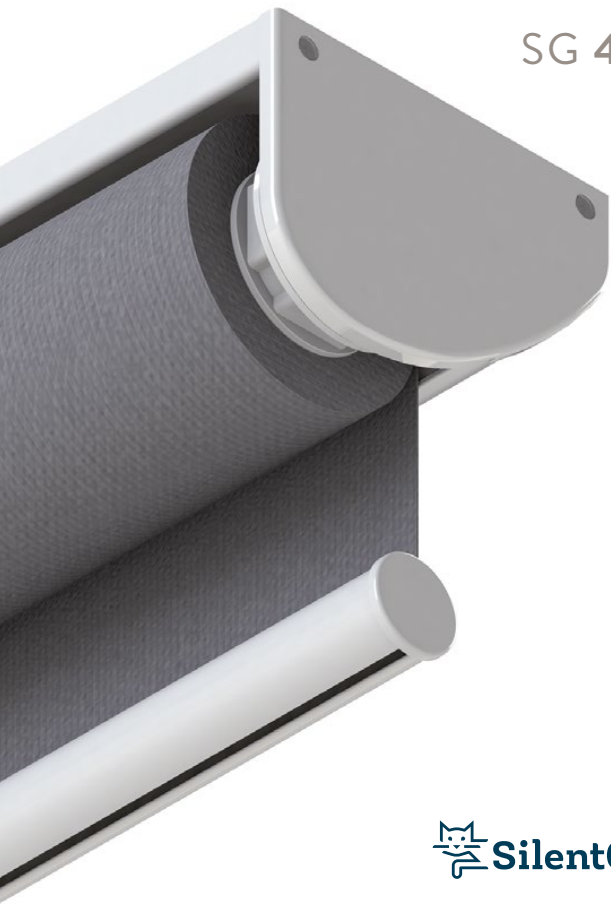


SG 2345

SG 4955



EN – OPERATION INSTRUCTIONS



1. SWITCH POWER ON



1. – Press and hold the motor **PROGRAMME** button for 1s
2. – Motor beeps once – then there is power to motor

2. SWITCH POWER OFF

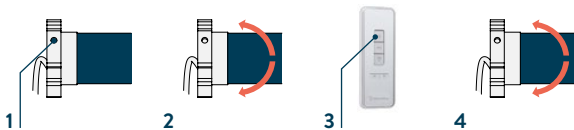


NOTE

After switching off the power the motor will not receive remote signals

1. – Press and hold the motor **PROGRAMME** button for 7s – motor pulses once after 1s
2. – Motor will give a long beep after 1s and then power off

3. PROGRAMMING

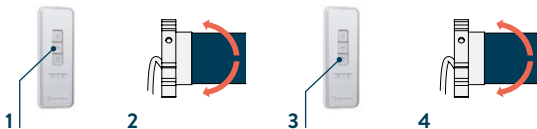


1. — Press the motor **PROGRAMME** button for 1s
2. — Motor pulses once
3. — Press **UP** button on the transmitter within 10s
4. — Motor pulses once, programming is complete

4. CHANGING DIRECTION

NOTE

Follow the instructions below if a direction change is required, if not skip to the limit setting instructions (5)

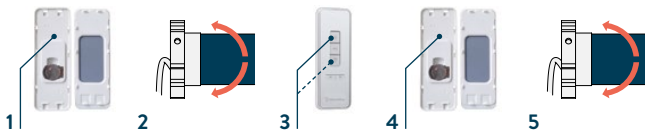


1. — Press **STOP** button on the transmitter for 5s
2. — Motor will pulse
3. — Press the **DOWN** button within 10s
4. — Motor will pulse once, direction reversed

5. FIRST LIMIT POSITION SETTING

NOTE

If no further action within 30s the motor will automatically exit from the limit positioning mode

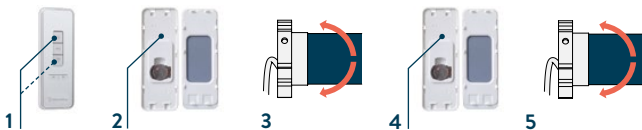


1. — Press **PROGRAMME** (for wall switch press **LEARN = PROGRAMME**) button on the back side for 1s
2. — Motor pulses once, enters into the limit setting mode
3. — Press the **UP** button to set the upper first limit or press the **DOWN** button to set the lower first limit
4. — Press **PROGRAMME** button on the back side for 1s to save the limit position
5. — Motor pulses once to confirm the limit is set

6. OTHER LIMIT POSITION SETTING

NOTE

If no further action within 30s the motor will automatically exit from the limit positioning mode

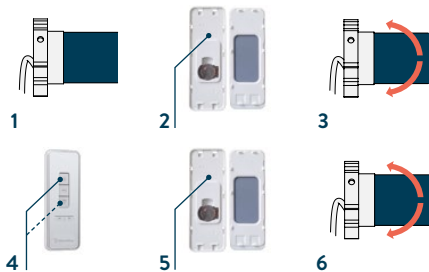


1. — Now press the **DOWN** button (or **UP** button if the **DOWN** button was used in Instruction 5) until the required limit position is reached
2. — Press **PROGRAMME** button on the back side for 1s
3. — Motor pulses to confirm limit setting mode
4. — Press **PROGRAMME** button on the back side for 1s to save the limit position
5. — Motor pulses once to confirm the limit is set

7. LIMIT POSITION FINE-TUNING

NOTE

If no further action within 30s the motor will automatically exit from the limit positioning mode



1. — Run motor to the limit position requiring fine-adjustment
2. — Press **PROGRAMME** button on the back side for 1s to enter setting mode
3. — Motor pulses to confirm limit setting mode
4. — Adjust to required position
5. — Press **PROGRAMME** button on the back side for 1s to save the limit position
6. — Motor pulses once to confirm the limit is set

8. DELETING A LIMIT POSITION

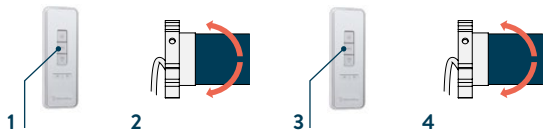


1. — Run the motor to the limit that requires deleting
2. — Press **PROGRAMM** button on the back side for 7s
3. — Motor pulses after 1s and enters into limit setting mode
4. — The motor pulses again after 7s and present limit setting is deleted

NOTE

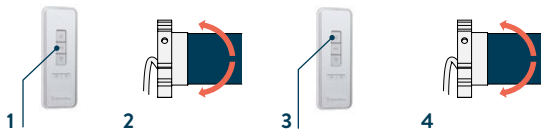
The first limit position can't be deleted

9. CHANGE BETWEEN PULSE MODE AND CONTINUOUS MOVEMENT MODE



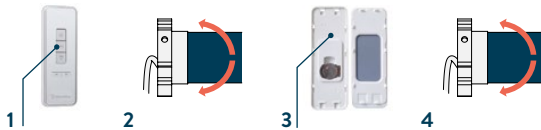
1. — Press **STOP** button on the transmitter for 5s
2. — The motor pulses once
3. — Press **STOP** button
4. — The motor pulses once to confirm conversion

10. ADD A NEW TRANSMITTER



1. — Press **STOP** on the programmed transmitter for 5s
 2. — Motor pulses once
 3. — Press **UP** button on the new transmitter
 4. — Motor pulses once confirming a new transmitter has been added
-

11. DELETE CHANNEL



1. — Press **STOP** on the programmed transmitter for 5s
2. — Motor pulses once
3. — Press **PROGRAMME** button on the back side for 1s
4. — Motor pulses once, single channel is deleted

12. CLEARING ALL MEMORIES

Method 1



NOTE

After deleting all limits, motor will return to factory settings

1. — Press the motor **PROGRAMME** button 5 times (at 1s intervals) and for the 5th time hold for 3s
2. — Motor pulses twice confirming that the memory has been cleared

Method 2



1. — Press the **STOP** button on the transmitter for 5s
2. — Motor pulses once
3. — Immediately press **PROGRAMME** button on the back side for 7s
4. — Motor pulses once after 1s
5. — Motor pulses twice after 7s confirming memory cleared

TROUBLE SHOOTING

Problem	Cause	Remedy
<i>Motor does not run or runs slowly</i>	a. <i>Incorrectly installed</i>	a. <i>Check if correctly installed</i>
<i>Motor does not run or runs slowly</i>	a. <i>Motor reaches the limit</i> b. <i>Flat battery</i>	a. <i>Normal situation</i> b. <i>Recharge/replace battery</i>
<i>Motor does not run or runs slowly</i>	a. <i>In power off mode</i> b. <i>Flat battery</i>	a. <i>Power on motor</i> b. <i>Recharge/replace battery</i>

Supplied by
SG-S | Silent Gliss Spares
Silent Gliss Systems
www.sg-s.co.uk email: sales@sg-s.co.uk
Tel: 0330 1272002 - 01395 232528